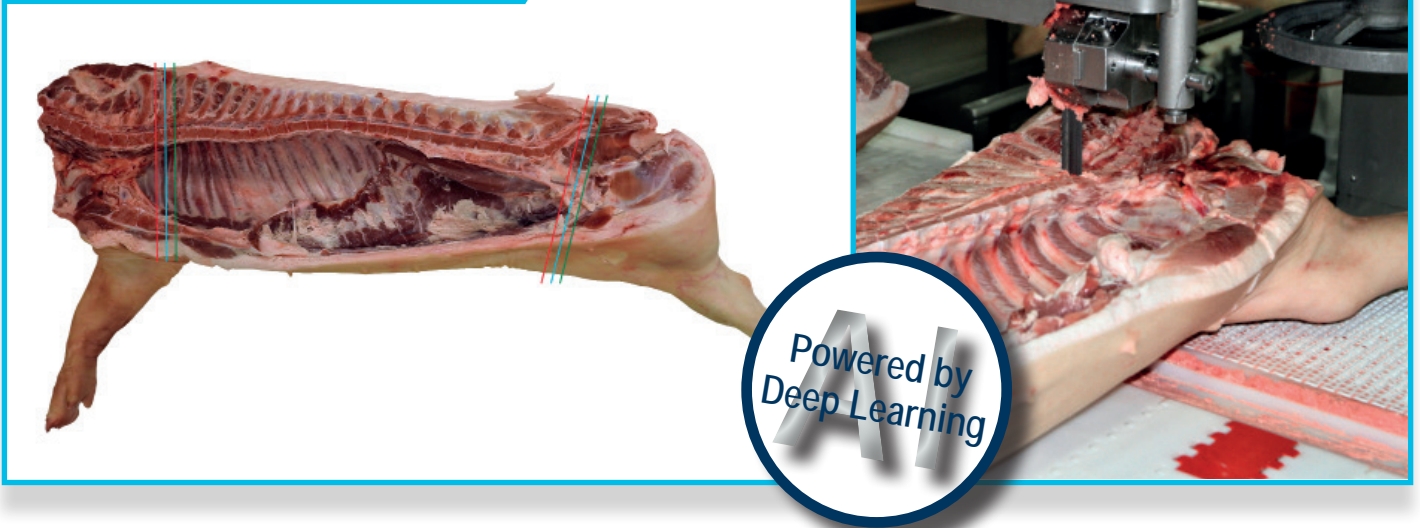


## Automatic Main Table (AMT)



## Inconsistent primal cuts are now a thing of the past

The Frontmatec automatic main table is the fastest and smartest vision-guided main table in the world, with a maximum capacity rated at 1,450 pigs per hour. It produces accurate shoulder and ham cuts, which facilitate every further processing steps while providing extreme customer adjustability to market demands.

Once again, Frontmatec brings innovations to the meat industry by the introduction of Artificial Intelligence and Deep Learning in AMT's software. Several thousand hi-tech 3D images of pork carcasses have been used to train the system and perfect the vision algorithms detection level. The software is further improved by learning subtle variations observed at each new installation.

The consistency of the AMT will unlock new opportunities in the production process, especially when used in combination with other Frontmatec equipment such as the automatic belly trimmer and the automatic loin puller.

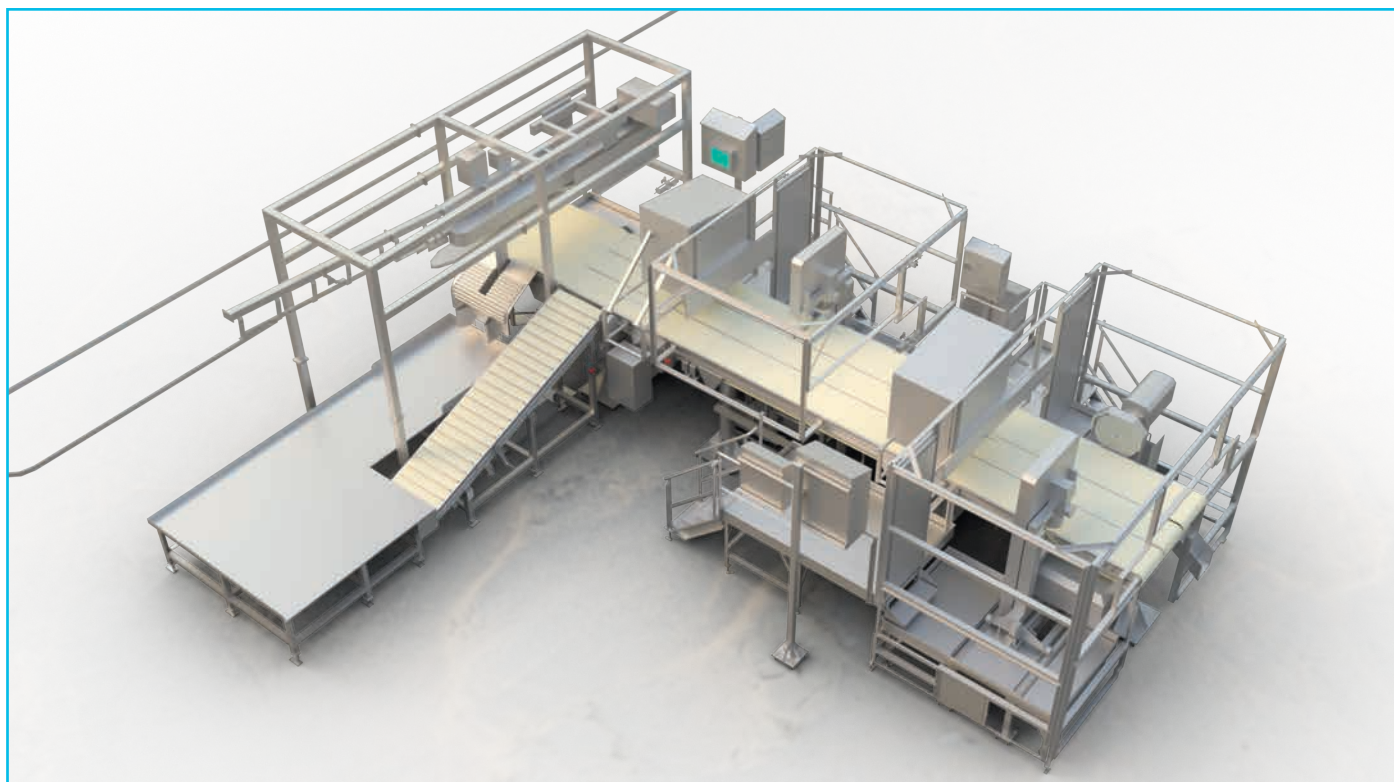
### Working process

1. Pigs are landed on the main conveyor
2. Operator manually pre-aligns the position and angle of the half-carcasses for ham cut off
3. The vision system acquires over 450,000 measurements to create a precise 3D model of the ham section and used to determine location of the aitch bone
4. Software computes the cut location based on the user configurable specifications (based on the aitch bone)

5. PLC controls an electrical linear actuator to move the band saw for an accurate ham cut
6. Operator manually pre-aligns the position and angle of the half-carcasses for shoulder cut off
7. A second vision system will scan the shoulder end of the half-carcasses in order to generate a 3D model of the piece
8. The software determines ribs location inside the thoracic cage to position ideal cut path based on customer requirements which can be relative to a reference point between the 1<sup>st</sup> and 5<sup>th</sup> rib
9. PLC controls an electrical linear actuator to move the band saw for accurate shoulder separation

### Why the Automatic Main Table!

- Produces consistent primals
- Ability to adjust breaks easily based on market values
- Reduces overcutting of the most profitable products
- Less rework of out of specification products
- Line speed up to 1,450 pigs/hour



## Hygiene

The AMT is manufactured in stainless steel and food grade components in order to withstand the harsh environment present in the food processing industry.

## Safety and legal requirements

The AMT is UL/CSA approved and designed in accordance with the USDA regulations to meet the strictest demand on health and safety.

## Technical data

Capacity	1,450 pigs per hour or 2,900 half carcasses per hour
Note: A minimum space of 4" is required between two half carcasses.	
Dimensions	
Length	One cell: 180"/two cells: 360"
Width	Conveyor: 63.3" Vision Enclosure: 97.3" Safety Guards: 143"
Width doors opened	7'2.13 m
Height (min/max)	68"/120"
Consumption	
Automatic system & vision	120V/1PH/15AMPS (per system)
Band saw	480V/3PH/20AMPS (per saw)
Electrical motion system	480V/3PH/20AMPS (per system)

Technical data may be subject to changes

## Contact

CN: shanghai@frontmatec.com  
Phone: +86 215 859 4850

DK: kolding@frontmatec.com  
Phone: +45 763 427 00

NL: rijssen@frontmatec.com  
Phone: +31 886 294 000

UK: birmingham@frontmatec.com  
Phone: +44 121 313 3564

[frontmatec.com](http://frontmatec.com)

DE: beckum@frontmatec.com  
Phone: +49 252 185 070

ES: barcelona@frontmatec.com  
Phone: +34 936 438 00

RU: moscow@frontmatec.com  
Phone: +7 495 424 9559

US: kansascity@frontmatec.com  
Phone: +1 816 891 2440